

GOVERNMENT OF JAMAICA

Hazard Mitigation Seminar 2011

Ministry of Transport and Works
National Works Agency
140 MAXFIELD Avenue,
Kingston 10
Jamaica

National Works Agency

- ✦ <http://www.nwa.gov.jm/content/home.aspx>
- ✦ is an executive agency under the portfolio of the Minister, MT&W.
- ✦ 5,000kms of roads [A - 885 km; B -769 km and C -3346 km.
- ✦ 14 parish offices across the island with a central headquarters located in Kingston.
- ✦ As an executive agency the NWA has established a set of operating norms which govern its development and sustainability of the MRN and its relationship with stakeholders.

✦ **Mission :** To plan, build and maintain a reliable, safe and efficient main road network and flood control system, which: Protect life and property; Support the movement of people, goods and services; Reduce the cost of transportation; Promote economic growth and quality of life; Protect the environment

✦ **Vision:** The National Works Agency will create a world class, safe, quality main road network, meeting the needs of our clients in the towns, communities and districts where they vacation, work and live.

Hurricanes/ storms over the past 8 years

- ✦ *October - December Rains 2001, Iris 2001.,*
- ✦ *May/June Rains 2002, Isadore /Lili Rains 2002,*
- ✦ *May Rains 2003 Hurricane Charley & Ivan Rains 2004,*
- ✦ *December Rains 2004,*
- ✦ *Hurricanes Dennis & Emily Rains 2005, Hurricane Wilma 2005,*
- ✦ *Hurricane Dean 2007, Hurricane Felix 2007.*



✦ Above: Road Destruction
Roselle- St Thomas

✦ Left Flooding Bull Bay, St
Andrew



12/09/2004



Major Projects Manager, George Knight looking at one of the drains in St. Thomas slated to be cleaned as part of the Disaster Mitigation component of the Special Flood Damage Programme.

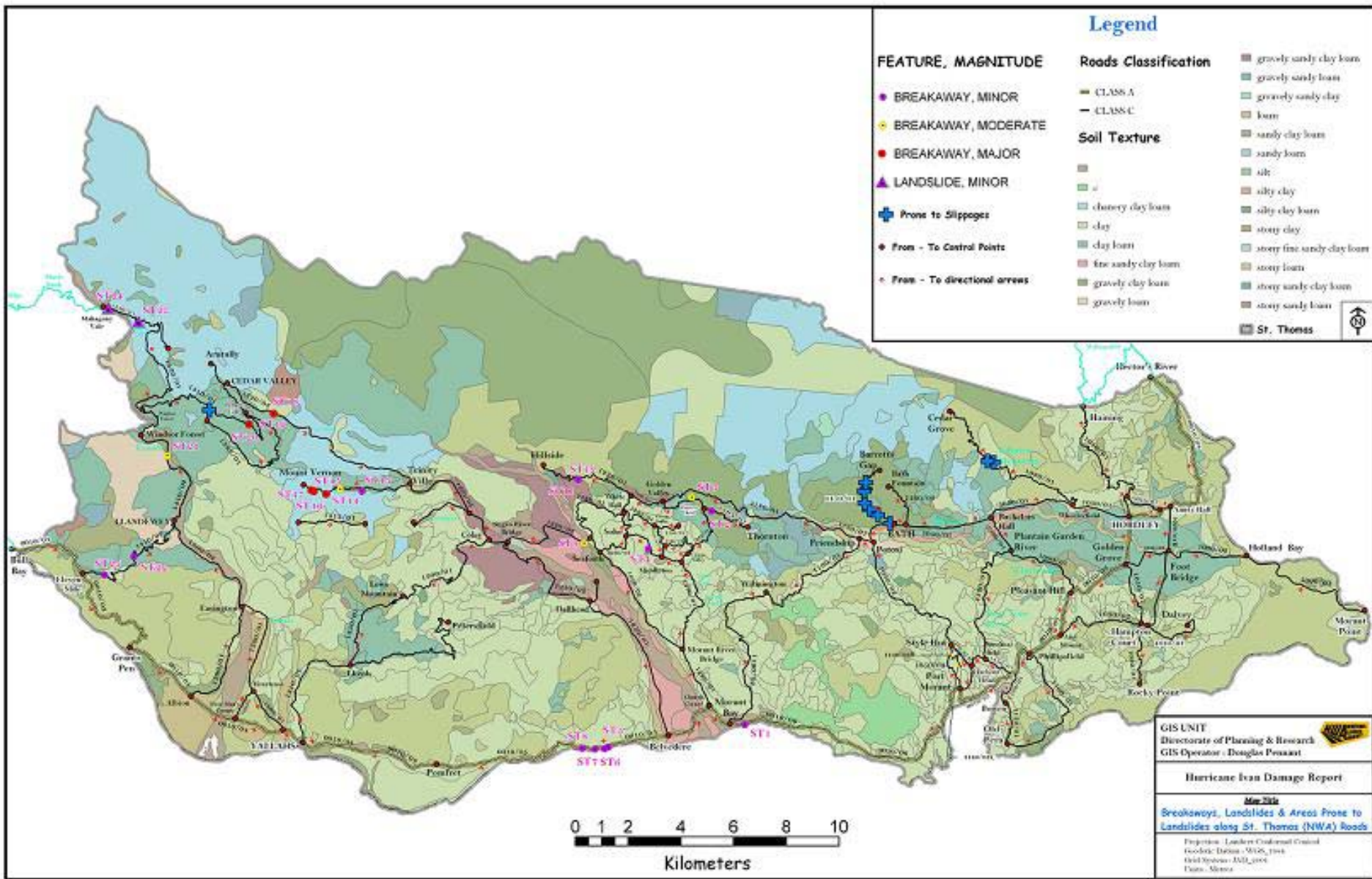
14 23:55

Hallhead to Bevedere main road in St. Thomas badly eroded as a result of August 4 -12, 2007 rains

✦ *Right - Alley Bridge,
Clarendon*

✦ *Below Bamboo – Bushy
Park St Catherine*





Map of the eastern parish of St Thomas showing Disaster Damage mapping Following Hurricane Ivan



✦ Damages along the Road to the Norman Manley International Airport

Current Readiness

- ✦ Yallahs River is no longer a threat to St Thomas access
- ✦ North Coast Highway Provides Ready access Negril to Port Antonio
- ✦ Highway 2000 provides access to Portmore and Mandela to Sandy Bay
- ✦ Drains being cleaned
- ✦ Retaining walls-Skyline drive completed
- ✦ Dry River Bridge is 80% complete and can provide pedestrian access

STRATEGY

- ◆ Drainage control improvement
- ◆ Development control/ management
- ◆ Disaster zoning
- ◆ Build/ no build areas
- ◆ Improved infrastructure

Improvement Plans

✦ JDIP

- Mandela highway
- Retaining walls Programme

✦ Master Drainage Plan study

Improvement Projects

- ✦ 11 Miles Fording
- ✦ Dry River Bridge
- ✦ Yallahs River Bridge
- ✦ RIO Grande Bridge
- ✦ Marcus Garvey Drive
- ✦ Palisadoes Road improvement
- ✦ Repairing community roads to ensure all weather access
- ✦ River training works

New flood resistant infrastructure:- drain in Flankers St James, Boulders for Palisadoes and new Yallahs bridge



Flooding Due To Hurricane Ivan 2004 in Bull Bay



Flooding Due To Hurricane Ivan 2004 in Bull Bay

